

# Future Christchurch Update

*The voice of the Canterbury rebuild*

AUGUST 2016

## Waimakariri residential red zones – proposed future uses

Page 3

## Lighting up Christchurch's grand old clock towers

Page 5

## Pasifika youth supported

Page 7

## Taking a look at SCIRT's underground work to date

Pages 8–9

People can now comment on proposals for the future use of residential red zone land in the Waimakariri District, such as that in Kaiapoi (shown in the foreground).

## Red zone proposals – what do you think?

Places for sport and recreation, memorial gardens, and rural and business activity are among the proposals for the future use of the residential red zones in the Waimakariri District.

These and other proposals are laid out in the Draft Waimakariri Residential Red Zone Recovery Plan.

What do you think of these proposals? You have until 5pm on 1 September 2016 to make a written comment.

The Draft Recovery Plan, prepared by Waimakariri District Council in consultation with the community, was handed to the Minister supporting Greater

Christchurch Regeneration Gerry Brownlee on 1 August, for public release and comment.

*You can read more about the Draft Recovery Plan, where to view it, and how to have your say, on page 3.*



DEPARTMENT of the  
PRIME MINISTER and CABINET  
*Te Tari o Te Pirimia me Te Komiti Matua*

GREATER CHRISTCHURCH GROUP

Christchurch  
City Council 



# Inside:

- 3 Draft future use plan for Waimakariri
- 4-5 Christchurch City Council facilities update
- 6 Ōtakaro Limited – Victoria Square
- 7 Young Cantabrian supports Pasifika youth
- 8-9 SCIRT – wastewater networks
- 10-11 Christchurch City Council
- 12 Land Information New Zealand & Canterbury District Health Board
- 13 Innovation Precinct
- 14 Environment Canterbury
- 15 Useful contacts

What's on...

Back Page

### Publishing details

This publication is jointly produced by Christchurch City Council and Greater Christchurch Group.

For editorial queries: editor@futurechristchurchupdate.co.nz

For delivery queries: delivery@futurechristchurchupdate.co.nz

ISSN 2422-8664

This work is licensed under the Creative Commons Attribution 3.0 New Zealand licence.

This publication is produced in a way that allows for maximum recovery and recycling of materials, significantly reducing energy use, air and water emissions.



PUB320.1608



## GREATER CHRISTCHURCH GROUP

**Kelvan Smith**  
Greater Christchurch Group Director  
Department of the Prime Minister and Cabinet

It's great to see so much interest and discussion happening around the region on the future for the residential red zones across greater Christchurch. With such a large area of land zoned red due to land damage, or risk from cliff collapse and rockfall – and most of that land now cleared – there's a unique opportunity to come up with plans that provide a real boost for those areas.

A Draft Recovery Plan for the residential red zones in the Waimakariri District is now open for written comment by anyone with an interest in the future use of those areas in Kaiapoi, Kairaki and The Pines Beach. The Draft Waimakariri Residential Red Zone Recovery Plan has been produced by Waimakariri District Council, with support from Environment Canterbury, Te Rūnanga

o Ngāi Tahu, Canterbury Earthquake Recovery Authority, and the unit I lead – the Greater Christchurch Group.

The written comments will be collated and analysed for consideration by Minister supporting Greater Christchurch Regeneration Gerry Brownlee, before he decides whether or not to approve the plan, or if any changes should be made.

I hope people will take the time to have a look and offer a view. You can read more about this process and opportunities for commenting on the page opposite. Regenerate Christchurch will lead a separate process when it comes to deciding on the future use of the Christchurch city red zones.

This issue of the Future Christchurch Update also features the latest on progress of the Stronger Christchurch Infrastructure Rebuild Team (SCIRT) – which is repairing Christchurch's damaged roads, bridges and underground pipes. It's been a big investment by the taxpayer and ratepayer into making sure water is reliably flowing again from taps, toilets are flushing, and roads and bridges can be travelled again. To see SCIRT is now 92 per cent of the way through its programme, and on track to complete its work by the end of this year, is a real tribute to all involved. ■



## CHRISTCHURCH CITY COUNCIL

**Karleen Edwards**  
Christchurch City Council Chief Executive

As we start the countdown to spring it is great to see work getting underway on new community facilities to replace some of those we lost as a result of the earthquakes.

These eagerly anticipated new facilities will become important community hubs – places where people can come together to share knowledge and experiences and to celebrate community events.

Where possible we are bringing community facilities that were once housed in separate locations together under one roof so that we create a synergy and get the best bang for our buck. In Sumner, for example, this means bringing together the library, the community centre and museum

into one state-of-the-art, two-storey building that draws inspiration from the local landscape.

We're taking a similar approach in Heathcote and Bishopdale where new combined facilities are being built to accommodate library services and community meeting spaces. The new Heathcote Community Centre should be open by the end of the year and the Bishopdale facility by the middle of next year.

While it is exciting to see progress being made on new facilities, it is also pleasing to see some of the city's heritage structures being celebrated. Feature lighting has recently been added to the Diamond Jubilee Clock Tower on Victoria Street and will

soon be added to the Edmonds Clock Tower on the corner of Oxford Terrace and Madras Street. This means people will be able to appreciate these two historic landmarks after dark.

Shortly we'll begin repairs on two other important city landmarks – the New Brighton Library and Pier. The pier is likely to be closed for a period of between 12 and 18 months but we hope to have the library re-opened in early 2017. ■

## Stronger Christchurch Infrastructure Rebuild Team (SCIRT) progress

92%

of the way through the entire SCIRT work programme



The SCIRT programme will be completed in December 2016

Source: Stronger Christchurch Infrastructure Rebuild Team (SCIRT).

# Public invited to comment on Draft Recovery Plan

People are being encouraged to have a say on a draft plan for the future use of the residential red zones in Canterbury's Waimakariri District.

The Draft Waimakariri Residential Red Zone Recovery Plan has been presented to the Minister supporting Greater Christchurch Regeneration Gerry Brownlee, who is now seeking written feedback on it.

The Draft Recovery Plan (Draft Plan) was prepared by Waimakariri District Council following an extensive process of engagement and discussion (outlined in the diagram below).

"Last year I asked the Council to produce a Draft Recovery Plan for 84 hectares of land in Kaiapoi, Kairaki and The Pines Beach red zoned due to damage caused by the earthquakes. That land is now largely owned by the Crown. The proposals in the Draft Plan have drawn on analysis of hazards and other land issues, and a range of public feedback," says Mr Brownlee.

Features of the Draft Recovery Plan include recommendations for

interim and long-term uses such as sports fields and recreation areas, a dog park, memorial gardens, and business. People can make comments until 5pm on 1 September 2016.

"What happens with this land will play a big part in the future prosperity for the whole Waimakariri District and will have impacts right across greater Christchurch, and I hope people take the time to have a look and give their thoughts," Mr Brownlee says.

After the period of public feedback closes, the Minister will consider whether to approve the Draft Recovery Plan, or if any amendments should be made.

Waimakariri Mayor David Ayers sees the Draft Plan as a significant step forward in the regeneration process for the district.



Recreation is a key feature of the Draft Plan.

"Preparation of this Draft Plan has been a complex, thorough and lengthy process," he says.

"Balancing the views of different communities with the range of business, cultural, neighbourhood, social and environmental factors involved was always going to be challenging."

Mayor Ayers says one of the future challenges once the Draft Plan has been considered and, if approved, will be the balance that needs to be struck between community expectations, timing and available funding.

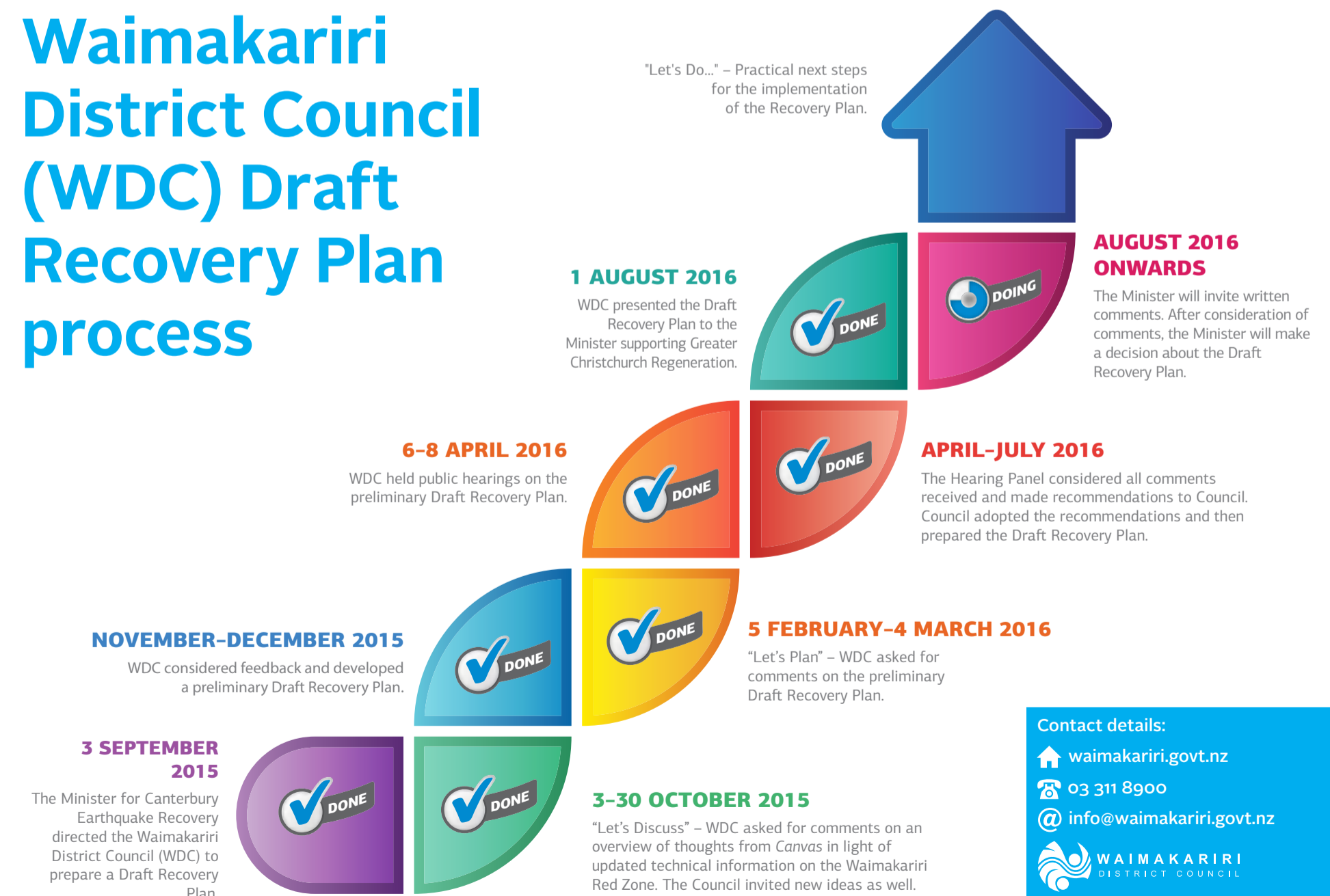
"Once we have a finalised Plan there is still a long way to go in confirming the funding necessary and the

specific shape of any projects that are mooted in the future. Detailed planning will require, and benefit from, further community involvement," he says.

To read the Draft Waimakariri Residential Red Zone Recovery Plan, and to give written comments online, visit [dpmc.govt.nz/future-use](http://dpmc.govt.nz/future-use) or go to the Greater Christchurch Regeneration Facebook page. You can also comment by emailing [info@gcg@dpmc.govt.nz](mailto:info@gcg@dpmc.govt.nz), or on printed forms (that can be posted for free) available at libraries and service centres around greater Christchurch. ■

# Waimakariri District Council (WDC) Draft Recovery Plan process

"Let's Do..." – Practical next steps for the implementation of the Recovery Plan.



Contact details:  
[waimakariri.govt.nz](http://waimakariri.govt.nz)  
 03 311 8900  
[info@waimakariri.govt.nz](mailto:info@waimakariri.govt.nz)



## Always breaking new ground

There's been an awful lot of sod getting turned lately. The good old-fashioned sod-turning – breaking the first ground on a new building – has been a frequent sight in Christchurch over the past month, with Christchurch City Council's City Services Group starting work on three brand-new, eagerly anticipated facilities.

### Bishopdale Library and Community Centre

Work is underway on this new centre in Bishopdale Mall, on the site of the former Bishopdale Crèche. It will feature a library with a 330-square-metre collection space, a large community hall and a meeting room all on one level, joined together by an atrium.

Bishopdale has been without a permanent library and community centre since the previous 1970s-era building was found to be below New Building Standard and uneconomic to repair. The popular temporary library will continue to operate in Bishopdale Mall until the new facility's grand opening in mid 2017.



### Heathcote Community Centre

This new combined facility is under construction. It will bring together a volunteer library and bookable meeting spaces on the Bridle Path

Road site of the previous, now-demolished Heathcote Community Centre. It is due to be completed by the end of 2016.



### New Brighton Library

New Brighton Library closed for repair on Monday 1 August, but customers won't have a long wait to see their favourite library services return, with a temporary library popping up in New Brighton Mall from Monday 15 August. Repairs are due to be finished in early 2017.

Right next door, work on New Brighton Pier is scheduled to begin in October 2016. The Salt on the Pier restaurant and café will remain open throughout most of the work.



### Sumner Library, Community Centre and Museum

Last month, Mayor Lianne Dalziel joined members of the community at the site of the new Sumner Library, Community Centre and Museum for a whakawātea (blessing) and to witness the first sod being turned.

The design for the building draws inspiration from the local landscape and incorporates natural timber, the colours of the seaside and architectural features from the demolished Sumner Community Centre and Museum.

The multimillion-dollar, two-storey 1,300-square-metre building will replace facilities that were lost as a result of the earthquakes. Construction of the new centre is expected to take about 10 months.

As part of the project, a new time capsule is being created to replace the one found during the demolition, which contained a 1907 edition of The Press newspaper, old coins and other trinkets.



For more information, go to: [ccc.govt.nz](http://ccc.govt.nz)

## Historic clock towers lit up

New lighting is helping one of Christchurch's treasured heritage clock towers to shine after dark.

Feature lighting has been added to the Diamond Jubilee Clock on Victoria Street so its architectural beauty can be appreciated at all hours of the day.

prominent businessman and philanthropist Thomas Edmonds to commemorate the jubilee of his residence in the city.

Shortly feature lighting will also be added to the historic Edmonds Clock Tower on the corner of Madras Street and Oxford Terrace.

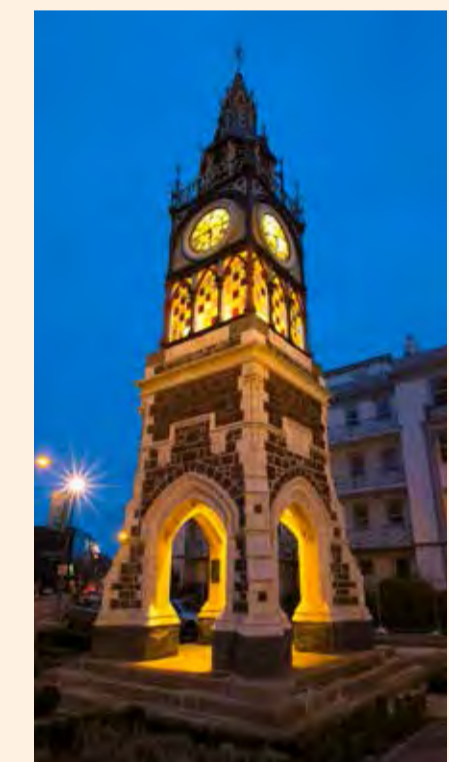
It was designed by Christchurch architect H Francis Willis, who was known for his work in the Art Deco and Spanish Mission styles popular in the 1920s and 30s, such as New Regent Street and the Repertory Theatre.

"Both clock towers were damaged in the February 2011 earthquake but have been carefully restored and are back to their former glory. We want them to have more prominence at night because they are important heritage structures so we're upgrading the historic light fixtures and adding some feature lighting," said Christchurch City Council Head of Urban Regeneration, Design and Heritage Carolyn Ingles.

It carries a category 2 Historic Places Trust listing and is also listed in the City Plan as a building of historic significance.

For more information, go to: [ccc.govt.nz](http://ccc.govt.nz)

"As we all know Christchurch lost many heritage buildings as a result of the earthquakes so it is really important we recognise and celebrate the heritage structures we have left."



The Diamond Jubilee Clock tower on Victoria Street was built in 1897 to mark the 60th anniversary of Queen Victoria's reign and is one of Christchurch's most treasured heritage landmarks.

The Edmonds Clock Tower dates back to 1929 and was part of a group of gifts along the Ōtākaro/Avon from



## New skate parks for Halswell

The Riccarton-Wigram Community Board has decided at a special meeting that skate parks should be built in both Halswell Domain and the Knights Stream Sports Park.

The board's decision follows months of consultation with the community and brings to an end a lengthy search for a suitable location for a skate park in the Halswell area for beginner to intermediate level riders.

Council Head of Parks Andrew Rutledge said with sites selected, the next step was to consult the community about the design of the parks.

Fifty-nine per cent of the 280 public submissions Christchurch City Council received about the siting of the skate park favoured putting it in Halswell Domain, next to the existing playground.

"The site specific detail design will be undertaken in conjunction with the community and we plan to hold some workshops in the next couple of months with school groups and community user groups," Mr Rutledge said.

Investigations by Council staff though concluded that Knights Stream Sport Park would be the best location.

"The parks will be designed so they integrate well into the landscape and existing facilities such as the playground spaces. There may need to be some alterations to the play equipment but there will be no loss of equipment," he said.

In the end the Board decided on both locations. They intend using the money set aside in the Council's capital works programme to fund the park in Halswell Domain and to use money from reserve contributions to fund the park in the Knights Stream Sports Park, if approved by Council.

A skateboarding area was first proposed for Halswell in December 2008 and is in line with the 2004 Christchurch City Council Skateboarding, Inline Skating and Freestyle BMX Cycling Strategy. ■

## Meet the rebuild workers

### Marvin Santos Carpenter, HRS Construction

#### Where are you from?

I come from a northern area of the Philippines. I came to New Zealand in September 2013, and my partner and our one-year-old son moved here last year. I have applied for residency but it's very slow.

#### What made you want to be part of the rebuild?

First when I came here, it was to help my family back home, for their future. An agency from Manila contacted me and asked if I wanted to go to New Zealand and I said, "Yes".

#### What excites you about the future of greater Christchurch and working in the rebuild?

I have enjoyed everything I've been doing since I came here. It is mostly commercial work. I

was working on the Malthouse [repair and strengthening], we [HRS] built a new building in Rolleston and I have worked on a school. I feel like I'm helping put things back together after the earthquakes, things that were damaged by the earthquakes.

#### What challenges you about the rebuild?

For me, living in Christchurch, the hardest part is experiencing the earthquakes. In the earthquake earlier this year, my partner was very scared and ran out of the house and slammed the door. I think they have been doing well rebuilding [the city]. I think that's okay.







A new punt stop opposite the Town Hall will be integrated into the surrounding landform and allow public access to and from the water.

## Work on Victoria Square to begin in spring

Believed to be the first lit water fountain in the southern hemisphere, the Bowker Fountain, will be returned to its former glory as part of the Victoria Square restoration plan.

The \$6 million restoration is being funded by the Crown and delivered by Ōtākaro Limited. It retains Victoria Square's park-like character and heritage monuments, the Queen Victoria and Captain Cook statues and the floral clock.

*“We’re looking forward to enjoying Victoria Square again, vanilla ice in hand, once the work is completed.”*

Sara Templeton  
Independent Reference Group Chair

“The design shows people will still be able to enjoy the sense of space within Victoria Square and access the Ōtākaro/Avon River, while benefiting from enhancements to this important civic asset that will make it safer and more accessible,” says Ōtākaro Limited Chief Executive Albert Brantley.

Given their age (25+ years), the materials used, and the effects of the Canterbury earthquakes, paved surfaces throughout the square

are not in good condition, resulting in trip hazards, ponding areas and uneven ground. With restoration in mind, the design team has gone back to drawings produced in the 1980s, and will be reinstating the look and feel that locals have known in recent decades as well as adding a layer that celebrates the city's bicultural heritage. Materials used will complement Victoria Square's place within the wider Te Papa Ōtākaro/Avon River Precinct. Sitting alongside the Convention Centre, Victoria Square will also provide a unique space (ātea) for conference guests to enter and receive a cultural welcome (pōwhiri).

“The new design elements – Ngāi Tahu story-telling, modern updating such as electricity points for audio, the historic Bowker Fountain working and lit at night – will mean Victoria Square offers not only a ceremonial welcome to the Convention Centre but a full welcome to Christchurch with our ‘story’ at the front door,”

says Christchurch Convention Bureau Manager and Independent Reference Group member Caroline Blanchfield.

The site's significance to Ngāi Tahu will also be recognised through a new artwork that will pay tribute to Ngāi Tahu Treaty of Waitangi signatories and mana whenua cultural values of the area. The low wall that sits behind the Queen Victoria statue will be etched with an integrated artwork complementing the principle of partnership through botanical motif.

A new punt stop opposite the Town Hall will be created that will also provide shade on the river's edge to support aquatic species. The name gifted to the punt stop by Ngāi Tūāhuriri (local Ngāi Tahu rūnanga) is Tauranga Waka.

The project has been greatly assisted by public participation and feedback in collaboration with strategic project partners the Christchurch City Council, Matapopore on behalf

of Ngāi Tūāhuriri, and Ōtākaro Limited. The developed design has been closely reviewed by an Independent Reference Group made up of heritage, local business, tourism, accessibility and youth organisations alongside Ngāi Tūāhuriri and representatives from the team that developed Victoria Square during the 1980s.

“The consultation process showed a clear desire for Victoria Square to remain largely as it is now and has seen the redevelopment of our treasured space become the Restoration Plan that we see today. We're looking forward to enjoying Victoria Square again, vanilla ice in hand, once the work is completed,” says Independent Reference Group Chair Sara Templeton.

Work will begin this spring and be completed by the middle of next year.

Contact details:

otakaroltd.co.nz  
03 357 6300  
info@otakaroltd.co.nz



*Ōtākaro Limited is a Crown-owned company delivering key anchor projects and precincts, and managing any potential future sale of Crown-owned land, in the central city.*

## Cantabrian strives to improve the mental health of Pasifika youth



Wesley Mauafu is a young leader, helping to put a smile on the faces of youth within his community. Aside from playing rugby and studying towards a Bachelor of Engineering with Honours at Canterbury University, Wesley works to improve the mental health of Pasifika youth.

He found his motivation two years ago, after he attended a suicide prevention training workshop.

“I was just really oblivious and ignorant of how big of an issue suicide was ... I learnt some real horrific stats which motivated me to want to make a change.”

New Zealand has one of the highest rates of youth suicide in the Organisation for Economic

Co-operation and Development (OECD). Pacific young people are nearly twice as likely to make suicide attempts as the rest of the population.

“The fact that suicide is the leading cause of death for young Pasifika males really hit home for me.”

Since then, the 20-year-old has become involved with a number of community groups. One is Pacific Youth Leadership And

Transformation, which encourages Pasifika to engage in politics and democracy. Two other groups he's involved in work to improve the mental health of Pasifika youth – the Growing Pacific Solutions Youth Action Komiti and Pasifika United to Lead Suicide Prevention Education (PULSE), which he helped to establish.

“The young people you're working with don't need the best people in their lives to make a change; they just need your best. Just give more, not like physically, but give it your all. Be a seed and plant the idea of helping others and give what you can. Whatever skill you have, it can be used to help others.”

Recently Mr Mauafu won the 2016 Canterbury District Health Board and All Right? Commitment to Wellbeing award, something he says came as a bit of a surprise.

“When you're doing community work, you're not doing it for awards. But the thing I loved the most about getting the award was that my mum was there, and a lot of the time I don't really tell my family about the community work that I do.”

Mr Mauafu says asking someone if they're all right can be really hard, but it's the first step and it can make a big difference to someone's wellbeing.



Wesley Mauafu, pictured with his mother, received the Canterbury District Health Board and All Right? Commitment to Wellbeing award.

Contact details:

cdhb.health.nz  
03 364 4106  
Canterbury District Health Board  
Te Poari Hauora o Waitaha

### Ministry of Health/ Canterbury District Health Board

On 1 December 2015, the Ministry of Health, working closely with Canterbury District Health Board, took on some additional leadership for coordinating psychosocial recovery work. On 1 March 2016, they inherited Canterbury Earthquake Recovery Authority's responsibilities for monitoring and reporting on community wellbeing.

## What are Canterbury's strengths?



Nearly 5,000 Cantabrians have discovered their hidden strengths as part of All Right's latest campaign.



- Kindness
- Honesty
- Humour
- Fairness
- Love
- Judgment
- Appreciation of Beauty & Excellence
- Love of Learning
- Creativity
- Social Intelligence
- Gratitude
- Perspective
- Teamwork
- Leadership
- Curiosity
- Spirituality
- Perseverance
- Forgiveness
- Bravery
- Prudence
- Humility
- Hope
- Zest
- Self-Regulation

We've all got strengths. Discover yours and how to use them at: [allright.org.nz/strengths](http://allright.org.nz/strengths)



# Repairing Christchurch's wastewater network: SCIRT's biggest challenge

## Huge investment in city wastewater networks

Christchurch has come a long way since the last emergency portaloos faded from sight in late 2012. As Stronger Christchurch Infrastructure Rebuild Team (SCIRT) enters the final five months of its construction programme, it reflects on the huge amount of underground work carried out to repair the city's sewerage system, since SCIRT was set up in late 2011.



SCIRT excavated a very large trench in Chester Street West in 2013 for the installation of the central city's largest underground pump station.

### More than a third of pipes damaged

Under our feet, but mostly invisible, is a vast network of wastewater pipes and pump stations carrying wastewater from sinks, laundries and toilets to the Bromley treatment plant.

The 2011 earthquakes inflicted an unprecedented amount of damage to that network. More than a third of the 1,770 kilometres of sewerage

pipes required some form of repair or replacement and many pump stations were damaged.

Restoring the wastewater network to good working order has been a massive job. It accounts for about 70 per cent of SCIRT's overall programme of fixing and replacing the city's underground pipe networks, roads, bridges and retaining walls.

### New pipes laid and pump stations built

The silver lining to so much damage being inflicted by the earthquakes is that Christchurch residents will have one of the most modern wastewater systems in the country, with several hundred kilometres of pipes repaired and replaced.

In the central city, SCIRT replaced most of the old clay pipes so the sanitation needs of the thousands of people moving into new office towers, shops, restaurants and entertainment venues could be accommodated.

Lessons have been drawn from how the earthquakes impacted on networks and applied to their new design and layout. Replacement pipes have been laid at both shallower depths and steeper slopes than the old earthenware pipes so that Christchurch people can be confident the networks will be better able to withstand future seismic activity.

The wastewater pumping system now has more power with about 30 new pump stations and 65 new lift stations – small pump stations – installed.

These new stations are mostly out of sight underground; the only indications they are there come from manhole lids and an electrical control box on the pavement or in a berm.

"Christchurch will have one of the most robust and modern networks of underground pipes in New Zealand when SCIRT has completed its programme," SCIRT's Executive General Manager, Ian Campbell, says.



Six vacuum arms in a new pump station on Bexley Reserve suck wastewater from households in Aranui to the pump station.

"New technology has been built into the repair and rebuild of Christchurch's wastewater infrastructure, helping to provide the city with a more resilient network," he says. ■

## New types of wastewater systems

In some suburbs prone to liquefaction and lateral spread, the damage was so severe SCIRT was challenged to come up with systems that would stand up better to any future seismic activity and be able to flex and move with ground movement better than the rigid, older gravity system did.

Aranui and Shirley residents now have brand-new vacuum wastewater systems that use suction to shift wastewater rather than relying on gravity.

Many kilometres of new pipes have been installed in the streets. Aranui's new system is the biggest in New Zealand and SCIRT is close to finishing connecting about 2,700 homes and businesses to it.

Another more resilient system installed more widely here uses pressure rather than gravity to move wastewater.

About 1,800 households in Christchurch, mostly in Southshore, Woolston, Aranui and Shirley, now have

pressure tanks underground on their properties that connect to kilometres of new pipes in their streets.

The beauty of the pressure and vacuum systems is that, as well as not needing gravity, they are installed at shallower depths so are easier to reach and fix if they become damaged.

Where the damage to pipes was less severe, SCIRT has used value-for-money and time-saving pipe lining methods of repair. This has avoided digging up and disrupting the streets and the lives of residents. ■



A pressure tank installed underground in a private property. Only the lid and an alert panel on the fence are visible.



Aranui mum Victoria Francis is pleased her suburb has a brand-new vacuum wastewater system.

### Cool new system

Aranui mum Victoria Francis is pleased to have New Zealand's biggest vacuum wastewater system in her neighbourhood.

"It's cool that Aranui is getting this. It's been a lot of effort by the people who are also repairing the roads. They try and do it as quickly as they can, which we appreciate."

The installation of many kilometres of new pipes and collection chambers in the roads and streets in Aranui for the vacuum system has been disruptive for residents for three years.

"It's frustrating but we understand it needs to be done," Victoria Francis says.

"There's no way round it. It's got to be done. I think everyone here just gets on with it. It's the Kiwi mentality." ■

### Quick facts



**562 kilometres** of wastewater pipes have been repaired and replaced

**73 pump stations** have been repaired and replaced



**2 vacuum wastewater systems** have been built



**1,800 properties** have pressure wastewater tanks installed

*"Christchurch will have one of the most robust and modern networks of underground pipes in New Zealand."*

Ian Campbell  
SCIRT Executive General Manager

Contact details:  
www.scirt.co.nz  
03 941 8999  
info@scirt.co.nz





# Repairs start on historic Fendalton fernery

An historic Fendalton fernery damaged in the earthquakes is being repaired and strengthened.

The Mona Vale Fernery was originally built for the New Zealand International Exhibition that was held in Hagley Park in 1906.

When the exhibition ended in 1907, the Fernery was sold to millionaire Annie Townsend, who had it dismantled and reassembled at Mona Vale.

Over the years the Fernery fell into a state of disrepair, but it was substantially rebuilt in the late 1990s by Christchurch City Council, with support from the Mona Vale Fernery Restoration Group.

When the earthquakes hit, the Fernery escaped with only minor damage but a subsequent detailed engineering evaluation assessed its

structural strength at only 1 per cent of New Building Standard (NBS). A reassessment in 2015 saw that figure increase to 34 per cent when the Fernery was considered separately to the collapsed boundary wall.

Christchurch City Council has now engaged contractors Dominion Construction Ltd to fix the damage to the building and to strengthen it to 67 per cent of NBS.

The work should be completed by the end of October.

The exotic and native ferns housed in the Fernery will not be impacted by the work, which is mainly happening on the exterior of the building. ■



The new overbridge joins Wigram Road and Magdala Place, better connecting the south-west of the city with Riccarton and Addington.

# Wigram Magdala Link open

The Wigram Magdala Link opened to travellers on 30 July, linking the communities either side of Cullerds Road. The project was completed ahead of time and under budget.

The overbridge joins Wigram Road and Magdala Place, better connecting the south-west of the city with Riccarton and Addington. It is also a key part of the Little River Link Major Cycle Route that stretches from the central city to Little River through Addington via the motorway and Lincoln.

The project was started in 2009 as part of the South West Area Transport Assessment to improve

travel connectivity in the area and to provide a connection for pedestrians and cyclists moving along the shared path beside the Southern Motorway.

The population around Wigram is growing, making the Link an important piece of infrastructure for the community.

To find out more, go to: [ccc.govt.nz](http://ccc.govt.nz) ■

# Missed out on enrolling for the elections?

Do you hate missing out? Are you concerned you won't have your say on the future of Christchurch in October's local elections?

Although enrolments for the electoral roll close on 12 August, if you miss out there's still time to enrol and get a special vote.

All you need to do is:

- get an enrolment form from [elections.org.nz](http://elections.org.nz), freetext your name and address to 3676 or call 0800 36 76 56
- once enrolled, email [elections2016@ccc.govt.nz](mailto:elections2016@ccc.govt.nz) or call 03 941 8999 or 0800 800 169 for special voting papers.

Electoral Officer Jo Daly says youth leaders like Tayla Reece are doing a great job of promoting the importance of local elections and recent enrolment rates in Christchurch are much higher than the national average.



Youth leader Tayla Reece: "I'm enrolled to vote because I want a city that young people feel proud to inherit."

"I'd like to thank everyone who has enrolled so far. With almost 40 per cent of people aged 18 to 24 still not enrolled, it's really important people realise there's still time to enrol and cast a special vote. Get in touch soon to make sure your vote counts," says Jo Daly. ■

# New Brighton 'Tiny Huts' winners announced

A Shell Chapel, a Mini Marae and a Turret are among the five winning 'Tiny Huts' designs that will be built in New Brighton. The winners were announced on Wednesday 27 July at New Brighton Mall. Each winner will receive \$2,000 and have their designs built over the next few months.



Tiny Huts People's Choice winner Ting Lin with Burwood-Pegasus Community Board Chair and Tiny Huts judge Andrea Cummings.

The Shell Chapel won the people's choice vote with the highest number of votes from the 1,576 people that attended the 'Tiny Huts' exhibition.

The 'Tiny Huts' are a play on English sea-side beach huts, each measuring 2 metres by 2 metres, and are to be placed in New Brighton's town centre to liven up the seaside suburb's public places over the 2016/17 summer season.

The winners are:

**Shell Chapel**  
(the people's choice winner) designed by Ting Lin

**Rawhiti Mini Marae**  
(the schools winner) designed by Manaia Wilson-Moses

**Art-omat**  
designed by Sasha Samardziska

**#MyBrightonHut**  
designed by Marike Uys

**The Turret**  
designed by Tessa Forde and Elena Lochore-Ward

The winners have now been matched with construction partners who will build the designs.

The judges commented that there were many other designs that would have made excellent 'Tiny Huts', which made judging very difficult. They acknowledged the following entries as Highly Commended designs:

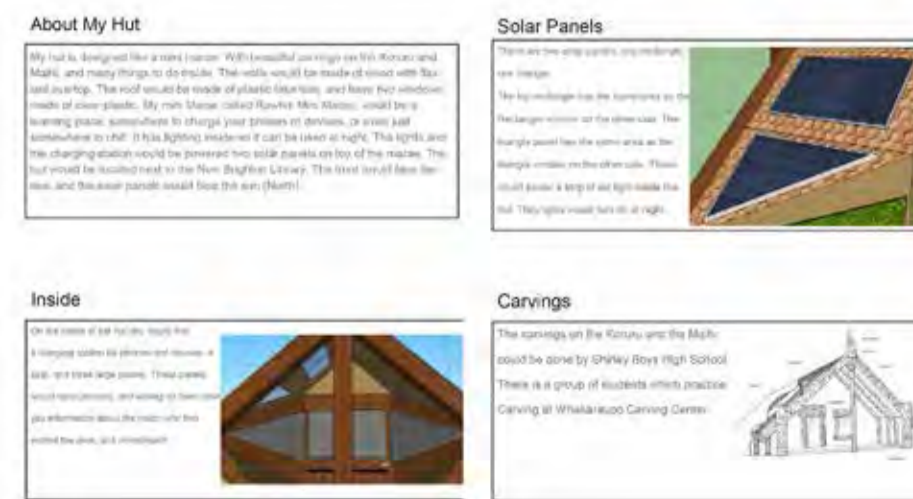
**Blown Away**  
Marieka Hitchcock

**Five Years On**  
Henry D'Ath

**Eye Deceiving Mirror Hut**  
Aynaz Nahavandi

**Mini Disco Shed**  
Liam Fox, Jeremy Roberts and Mose Wescombe from Rangiora New Life School

For more information go to: [ccc.govt.nz/tinyhuts](http://ccc.govt.nz/tinyhuts)



SCHOOLS CATEGORY RAWHITI MINI MARAE SHILLEY BOYS HIGH SCHOOL - MANAIA WILSON-MOSES



OPEN CATEGORY SHELL CHAPEL TING LIN



OPEN CATEGORY ART-OMAT SASHA SAMARDZISKA



OPEN CATEGORY #MYBRIGHTONHUT MARIKE UYS



OPEN CATEGORY THE TURRET - TESSA FORDE, ELENA LOCHORE-WARD

## NEWSLINE

News, information

Stay up-to-date with what is happening in Christchurch and get information first on Newsline. [ccc.govt.nz/newsline](http://ccc.govt.nz/newsline)

Christchurch City Council



## New outpatients facility underway in the Health Precinct

Construction work continues to transform Canterbury District Health Board (CDHB) sites. Staff are enjoying the new facilities at Burwood Hospital on one side of the city, while the start of work on the new outpatients facility is being welcomed at the other.

The facility is located in the Health Precinct on St Andrew's triangle, directly opposite Christchurch Hospital and close to a proposed bus Super Stop. The new building will provide a variety of services, including general outpatient consultation clinics, along with dental, ophthalmology, allied health and diabetes services.

The land was formerly the site of the Presbyterian St Andrew's Church that opened in 1857. The church building was relocated to Rangi Ruru School in 1987 and, because of the historical significance of the location, an archaeologist will be on site during the initial ground-scraping works.

Murray Cleverley, Canterbury DHB Board Chair and member of the Hospitals Redevelopment Partnership Group, says he is delighted with the progress of the Christchurch Outpatients.

"A completed new facility will be a major achievement as part of the bigger Christchurch Hospital redevelopment picture," Mr Cleverley says.

"The new outpatient facility will finally bring together again a number of general consultation clinics and provide for the delivery of a range of services that have been dispersed across CDHB sites since the Canterbury quakes



A blessing and ground-breaking ceremony was held recently on the site of the new Christchurch Outpatients building.

significantly damaged a number of our health facilities."

Currently most outpatient clinics are temporarily housed in Hagley Outpatients, a facility built in just 100 post-quake days. Once the new outpatients facility is open, part of the Hagley Outpatients building will be relocated, as planned, to find a second lease of life as part of Rangiora's new Health Hub.

As well as an intensive building programme, there are several public health campaigns underway. Care around the Clock is a reminder for

people that they can phone their general practice any time of the day or night for health advice. If it's after hours, a nurse will let you know what you can do and where to go if you need to be seen. Remember if you are feeling unwell, see your general practice sooner rather than later. A good idea is to put your doctor's phone number in your mobile, so you can call it any time.

To find out more, go to: [cdhb.health.nz](http://cdhb.health.nz)

## Drone technology helps with work in Port Hills

Unmanned Aerial Vehicles (UAVs) are helping Land Information New Zealand (LINZ) to continue property clearance work in areas of high risk in the Port Hills residential red zone.

LINZ is using the UAVs, also known as drones, to assess areas where it is too dangerous for people to go. Drones are collecting visual data from cliff edges to analyse cracking patterns as well.

"Drones are safe, efficient and cost-effective," says Brenden Winder, LINZ's Group Manager Port Hills. "We can do visual inspections in hazardous locations without putting people in harm's way. We can do site inspections in a fraction of the time.

**"The [drone] technology is an important part of what we do, but the 'special' bit is what we do with this information."**

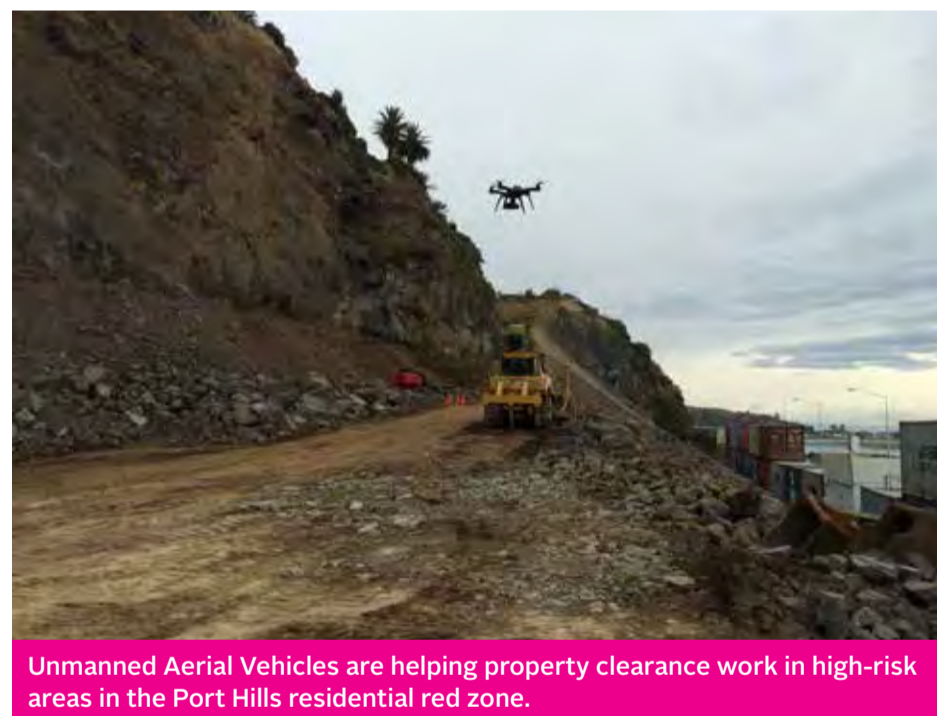
Brenden Winder  
LINZ Group Manager Port Hills

"And we're also able to inspect and monitor large and remote areas that would otherwise require more costly solutions, such as helicopters or specialist equipment.

"UAV technology is becoming more widely available and more advanced each year. The technology is an important part of what we do, but the 'special' bit is what we do with this information. We use it for our site investigations, hazard analysis and monitoring."

By taking the visual imagery collected by the UAV and interpreting it, work can be carried out in a safer manner on site. Once clearance is completed, LINZ monitors the progress of site stabilisation and the effectiveness of its environmental controls.

"So, for example, large-scale new plantings and long drainage channels can be quickly assessed using this



Unmanned Aerial Vehicles are helping property clearance work in high-risk areas in the Port Hills residential red zone.

**Land Information New Zealand (LINZ) inherited Canterbury Earthquake Recovery Authority's responsibilities for clearing Crown-owned properties, and the maintenance of Crown-owned land, in the residential red zones.**

technology, rather than putting staff on the ground," Mr Winder says.

"Using drones ultimately leads to a safer environment for everyone. More consistent data capture allows our projects to be better recorded over time, leading to a comprehensive photo library which will be a valuable reference point in the future land use considerations." ■

Contact details:

linz.govt.nz

0800 665 463

customersupport@linz.govt.nz



Work is underway on landscaped public spaces (shown here behind the new Vodafone building) that will continue throughout the South Frame.



Floors made from recycled rubber tyres and timber from earthquake-damaged buildings were used in the new Kathmandu global headquarters.

## Ideas become reality in the Innovation Precinct

Two key anchor tenants have now officially opened their newly built head offices in Christchurch's Innovation Precinct.

Late last month, telecommunications company Vodafone officially opened its purpose-built, five-level South Island headquarters, InnoV8, on Tuam Street. Its 350 staff, previously working at three different sites, have been transitioning into the new central city building over the past two months.

Cutting-edge technology at InnoV8 means smart phones can be used for anything from staff access (making swipe cards a thing of the past) to consoles for presentations at state-of-the-art meeting rooms.

The building has achieved a 5 Green Star Design rating from the New Zealand Green Building Council due to its sustainable, energy-efficient

design. Its green features include passive solar design, a façade designed to maximise daylight while balancing heat levels, systems to reduce landfill waste and encourage recycling, and natural ventilation. It backs onto a landscaped area next to Dux Central that the Government is developing as part of the South Frame public spaces programme.

The Vodafone Christchurch building features an 'innovation incubator' technology lab or 'xone™' to help small to medium-sized business start-ups.

Nearby, in June Kathmandu officially opened its new three-storey worldwide head office in the Christchurch Innovation Precinct.

It has brought over 180 staff, representing 25 nationalities and including its product design, systems and online development teams, to its new Madras Street location. The Kathmandu building's energy-efficient measures include LED lighting, motion light detectors and efficient heating, ventilation and air conditioning systems. Using energy-efficient installations such as these can reduce total energy use by an estimated 30 per cent.

Minister supporting Greater Christchurch Regeneration Gerry Brownlee says the Precinct has been an important component of the Christchurch Central Recovery Plan, and it is already becoming a top address for innovative businesses in the city.

He says the arrival of both Vodafone and Kathmandu marks a new phase of growth for the Innovation Precinct.

Covering an area of approximately 3.6 hectares in the South Frame, the Precinct is located within three city blocks bounded by Lichfield, Manchester, St Asaph, High, Tuam and Madras streets. It is managed by the Canterbury Development Corporation and Crown entity Ōtākaro Limited.

For more information, go to: [innovationprecinct.nz](http://innovationprecinct.nz)

## What else is happening in the central city?

The recent re-opening of the historic Christchurch Club on Latimer Square and the opening of the Fino Hotel & Suites on Kilmore Street, along with the openings of the new Vodafone and Kathmandu buildings, herald more progress for the central city.

The original Christchurch Club dates back to the 1850s. The present Benjamin Mountfort-designed clubhouse was built in 1861/2 and was badly damaged in the February 2011 earthquake.

An extensive rebuild and restoration process is now complete and the Club re-opened on 1 August for functions and accommodation for members and reciprocal members. The building is protected as a Category 1 Historic Place.

The seven-storey Fino Hotel & Suites opened in July after substantial refurbishment and earthquake strengthening. The building is located on Kilmore Street, at the old Fino Casement Hotel site. It is believed to be the country's first pet-friendly hotel, allowing pets to stay in the same room as their owners. ■



Christchurch Club restored and rebuilt: the original timber Italianate design of the Latimer Square and Worcester Street frontages has been preserved.



The newly opened pet-friendly Fino Hotel & Suites includes 48 apartment suites and four penthouse suites.



This new eight-level car parking building (corner of Madras and Lichfield streets) is being used by Vodafone and Kathmandu as well as other Innovation Precinct tenants.





Follow common-sense backyard hygiene in your garden – wear gloves as a barrier between your hands and the soil.

## Potentially hazardous land identified in Selwyn district

Environment Canterbury has notified about 1,800 property owners in the Selwyn district that their land could be affected by chemicals or hazardous substances remaining in the ground from a previous land use. This includes residents of Tai Tapu, Prebbleton, Templeton, Lincoln and Rolleston.

Since 2008, regional councils throughout the country have been required to identify previous land uses.

Christchurch went through the process two years ago, and land uses in the Waimakariri and Hurunui districts were also identified, as well as those in Kaikoura and Ashburton.

A letter recently sent to Selwyn residents stated the previous or current use of their land, such as for an orchard, market garden or landfill. These properties were then placed on the Listed Land Use Register (LLUR), a publicly available database.

Being on the LLUR doesn't necessarily mean a property is contaminated. Rather, it means an activity happening on the land, either

now or in the past, is one that the Ministry for the Environment has on its Hazardous Activities and Industries List (HAIL).

The most common land uses in Selwyn that Environment Canterbury identified were persistent bulk storage or use of pesticides (including in sports turfs, orchards, market gardens, and glasshouses), livestock dip or spray race operations and landfill sites. About 70 per cent of the properties identified were on rural land.

Environment Canterbury scientist Davina McNickel says it's only those land owners who are doing major earthworks or subdividing who will have to take any action. This is important as Selwyn continues to

expand with new subdivisions and buildings.

"Just because someone's land has been an orchard doesn't necessarily mean hazardous substances were actually used or buried there – just that they could have been. It's our job to record this and let the land owner know," Ms McNickel says.

"People have a right to know what their land has been used for in the past. Based on our experience in dealing with these types of sites over many years, it's considered unlikely that concentrations of hazardous substances in Canterbury soils will be high enough to cause long-term health effects."

Environment Canterbury has been working closely with Selwyn District Council to ensure people have the right information to understand what being on the LLUR means for them.

If people are carrying out major earthworks or subdividing, they can contact Selwyn District Council on (03) 347 2800 or (03) 318 8338, or call Environment Canterbury on 0800 677 748.

Contact details:  
[ecan.govt.nz](http://ecan.govt.nz)  
 03 353 9007  


## Explore Selwyn with new walking and biking guide

A new 77-page walking and biking guide to Selwyn district is now available. Selwyn District Council developed the guide for local residents and tourists, which they can pick up from Selwyn libraries or access online at [sensationalselwyn.co.nz](http://sensationalselwyn.co.nz) (under the brochures link).

The Sensational Selwyn Walking & Biking Guide lists 67 different walks and 17 biking tracks. It includes sections covering short and longer walks by area, along with maps of different routes.

The guide also has useful information such as walk times, distances and intensity, and whether routes are wheelchair accessible.

*"We hope people will enjoy using the guide to explore Selwyn."*

Elizabeth Pitcorn  
 Selwyn Tourism Advisor

"The Selwyn district has a huge range of fantastic walks and cycle tracks across different landscapes – with easy and more advanced options on the plains, in local townships and in our high country where you can enjoy our wonderful scenery," says Elizabeth Pitcorn, Selwyn Tourism Advisor. "We hope people will enjoy using the guide to explore Selwyn."



The Sensational Selwyn Walking & Biking Guide lists a huge range of walks and cycle tracks across the Selwyn district.

Some of the scenic walks featured in the guide include the Arthur's Pass walking track through alpine vegetation, waterfalls and wetlands, and the Castle Hill limestone reserve walk.

Contact details:  
[selwyn.govt.nz](http://selwyn.govt.nz)  
 03 347 2800 or 03 318 8338  


## Useful contacts



Christchurch City Council  
 03 941 8999  
 0800 800 169  
[info@ccc.govt.nz](mailto:info@ccc.govt.nz)  
[ccc.govt.nz](http://ccc.govt.nz)

EQC  
 0800 DAMAGE  
 0800 326 243  
[eqc.govt.nz](http://eqc.govt.nz)

SCIRT  
 03 941 8999  
[info@scirt.co.nz](mailto:info@scirt.co.nz)  
[strongerchristchurch.govt.nz](http://strongerchristchurch.govt.nz)

Waimakariri District Council  
 03 311 8900  
[waimakariri.govt.nz](http://waimakariri.govt.nz)

Environment Canterbury  
 03 353 9007  
[ecan.govt.nz](http://ecan.govt.nz)

Selwyn District Council  
 03 347 2800  
 03 318 8338  
[selwyn.govt.nz](http://selwyn.govt.nz)

Canterbury Support Line  
 0800 777 846

Earthquake Support Coordination Service  
 0800 777 846

Canterbury Earthquake Temporary Accommodation Service  
 0800 673 227  
[quakeaccommodation.govt.nz](http://quakeaccommodation.govt.nz)

Residential Advisory Service  
 03 379 7027  
 0800 777 299  
[advisory.org.nz](http://advisory.org.nz)

Canterbury Earthquake Recovery Authority (CERA) came to an end on 18 April 2016. CERA's former functions transitioned to a number of new and/or existing agencies.

Greater Christchurch Group (within DPMC)  
[info@gcg@dpmc.govt.nz](mailto:info@gcg@dpmc.govt.nz)  
[dpmc.govt.nz/gcg](http://dpmc.govt.nz/gcg)

Ōtakaro Limited  
 03 357 6300  
[info@otakarold.co.nz](mailto:info@otakarold.co.nz)  
[otakarold.co.nz](http://otakarold.co.nz)

Ministry of Business, Innovation and Employment  
[mbie.govt.nz](http://mbie.govt.nz)

Documents from the CERA website ([cera.govt.nz](http://cera.govt.nz)) have been archived and can be accessed at:  
[ceraarchive.dpmc.govt.nz](http://ceraarchive.dpmc.govt.nz)

Regenerate Christchurch  
[regeneratechristchurch.nz](http://regeneratechristchurch.nz)

Land Information New Zealand (LINZ)  
 0800 665 463  
[customersupport@linz.govt.nz](mailto:customersupport@linz.govt.nz)  
[linz.govt.nz](http://linz.govt.nz)

Ministry of Health/Canterbury District Health Board  
[health.govt.nz](http://health.govt.nz)  
[cdhb.govt.nz](http://cdhb.govt.nz)  
[cph.co.nz](http://cph.co.nz)

## CARE AROUND THE CLOCK

Make your GP team your first call 24/7.

Even after hours a nurse is available to give free health advice. Phone your usual General Practice number 24/7.

#carearoundtheclock



Canterbury  
 Health Region  
 Te Raukawa o Waitaha



# What's on...

## WORD Christchurch Writers & Readers Festival

24–28 August, various times and locations

Five days of presentations, conversations with authors, journalists, historians, thinkers and more. Various prices.



### 2050

26 August, 5.30pm  
Isaac Theatre Royal

Ice caps melting, mass migrations occurring and war threatening. Hear experts discuss where we will be in 2050. \$25



### In Love With These Times: A Flying Nun Celebration

27 August, 7.30pm  
The Tannery

\$25



### JD Duathlon Series Race 2 (Tai Tapu)

28 August, 9am  
Tai Tapu Golf Course

Duathlon suitable for the entire family and beginners! Children from \$20, adults from \$49



### Christchurch Primary Schools Cultural Festival

29 August – 2 September, various times  
Horncastle Arena



### Teachers by John Godber

1–10 September, 7.30pm  
Isaac Theatre Royal

Salty, Hobby and Gail give their account of their time at school, specifically a drama teacher who ignited their passion for the stage. \$26



### Hinepau

2 September, 11am  
Isaac Theatre Royal

Based on the book of the same name, join Hinepau on her journey. \$9



### Kids for Kids Concert

5 September, 6pm  
Horncastle Arena

Full of your favourite Kiwi songs.



### Scooter Safari

10 September, gates open at 8am, ride begins at 9am  
Mike Pero Motorsport Park

250 motorised scooters riding 250km for charity. Donation



### Flight Centre Expo

28 August, 9am  
Horncastle Arena

Talk to experts about what to see, where to stay and all the must do's for your holiday.



### Evita

15 September – 1 October, 7.30pm  
Isaac Theatre Royal

Follow Eva Duarte, during her early life, her meteoric rise to power, and untimely death at 33. From \$47.50



### Engelbert Humperdinck

6 September, 7.30pm  
Horncastle Arena

The 'King of Romance' returns to NZ. From \$100.50



### All Blacks v South Africa

17 September, 7.35pm  
AMI Stadium

Two of the rugby world's heavyweights meet again.

The events featured on this page are just a selection of what's happening in Christchurch over the next few weeks. Find out more online. ■

**Be There** >>>  
CHRISTCHURCH EVENTS

For more events visit:  
[bethere.co.nz](http://bethere.co.nz)